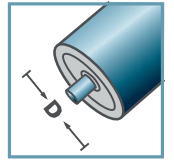


SLR	
Type	Load Rating C [daN]
SLR-480	20

Rolka stalowa ocynkowana.

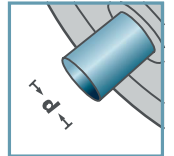


SLR-



D [mm]

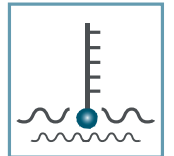
-



d [mm]  
6; 8



C [daN]  
20



T [°C]  
-30° - 140°



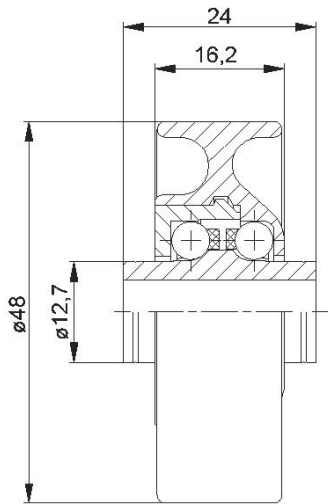
-



Carton [pcs.]

250

KLR/SLR/SR


**KLR-02/03**

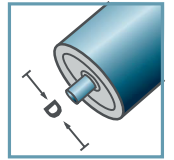
Type	Normal .02	Stainless .03	Load Rating C [daN]
KLR-480	x	x	15

Rolka z tworzywa sztucznego.

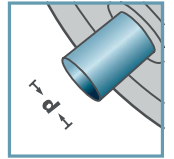
Kule dla wykonania:

02 standardowa stal łożyskowa

03 stal 1.4034


**KLR-02  
KLR-03**

**D [mm]**

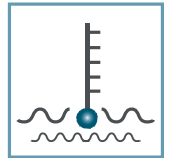
-


**d [mm]**

6; 8


**C [daN]**

15


**T [°C]**

0° - 80°

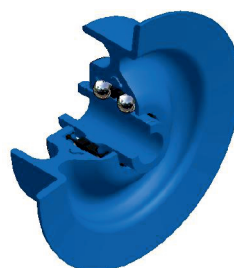
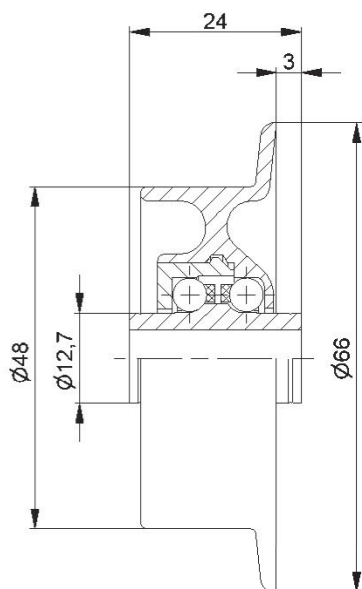


-


**Carton [pcs.]**

250

# KLR/SLR/SR



SR-02/03			
Type	Normal	Stainless	Load Rating C [daN]
SR-480	x	x	10

Rolka kołnierowa z tworzywa sztucznego.

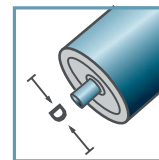
Kule dla wykonania:

02 standardowa stal łożyskowa

03 stal 1.4034

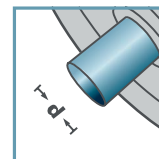


SR-02  
SR-03

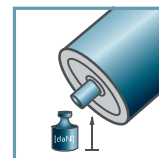


D [mm]

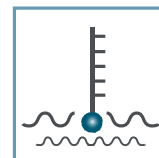
-



d [mm]  
6; 8



C [daN]  
15



T [°C]  
0° - 80°



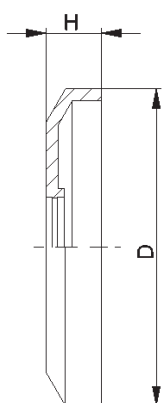
-



Carton [pcs.]

250

KLR/SLR/SR

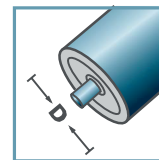


DK-KLR		
Type	D	H
DK-KLR-02	40,5	7

Pokrywka uszczelniająca z tworzywa sztucznego.

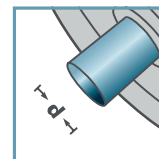


DK-KLR-02



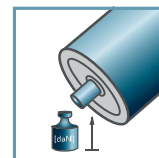
D [mm]

-



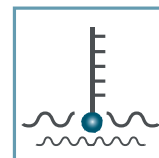
d [mm]

-



C [daN]

-



T [°C]

0° - 80°



-



Carton [pcs.]

-

KLR/SLR/SR