

### MTR-16

Typ	Di ±0.1	Da ±0.2	C [daN]
MTR-30x1,2.16	27,6	29,6	30
MTR-30x1,5.16	27,3	29,6	30

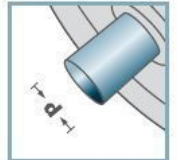
Piasta stalowa ocynkowana.  
Koszyk kul z tworzywa sztucznego.



### MTR-16



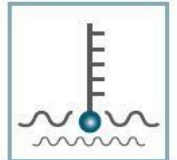
**D** [mm]  
30



**d** [mm]  
6; 8; 10



**C** [daN]  
30



**T** [°C]  
0° - 100°



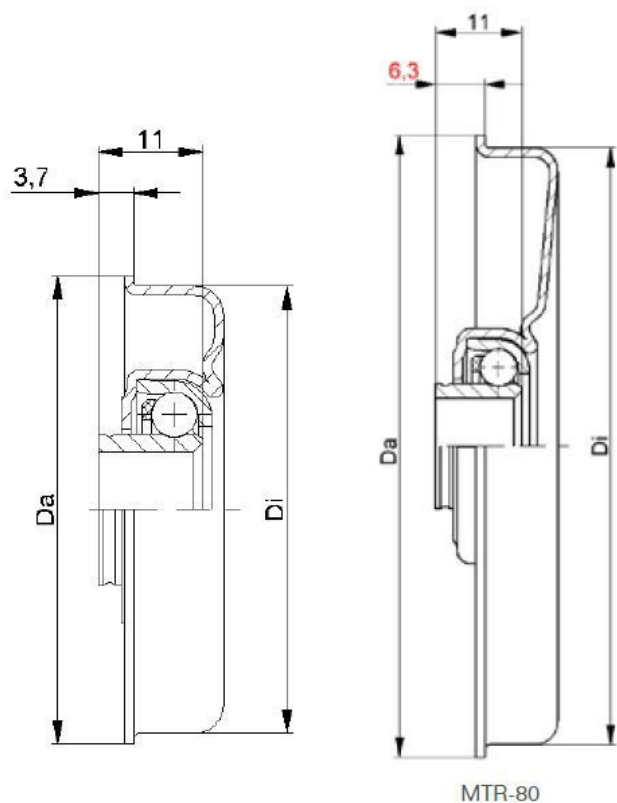
Vactra No. 2



**Karton** [Stck.]

500

# MTR

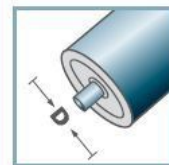


MTR-80

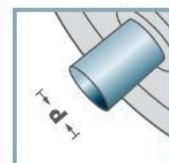
**MTR-20**

Typ	Di ±0.1	Da ±0.2	C [daN]
MTR-40x1,5.20	37,3	39,5	80
MTR-40x2,0.20	36,3	39,5	80
MTR-48x1,5.20	45,3	47,5	80
MTR-50x1,5.20	47,3	49,5	80
MTR-50x2,0.20	46,3	49,5	80
MTR-60x1,5.20	57,3	59,5	80
MTR-60x2,0.20	56,3	59,5	80
MTR-80x2,0.20	76,4	79,5	80

Piasta stalowa ocynkowana.  
Łożysko typu RL-20  
Koszyk kul z tworzywa sztucznego.

**MTR-20**

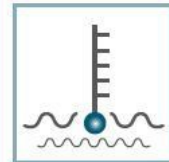
**D** [mm]  
40 - 80



**d** [mm]  
8; 10; 12; SW11



**C** [daN]  
80



**T** [°C]  
0° - 100°



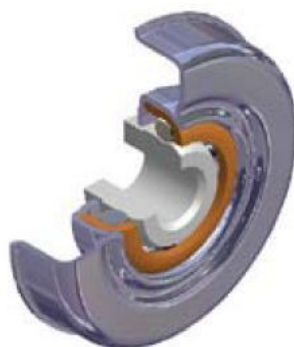
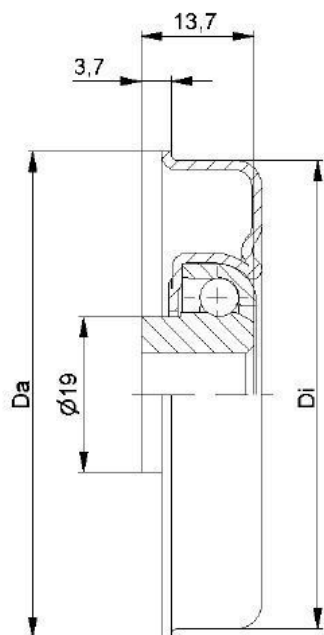
Vactra No. 2



**Karton** [Stck.]

ø40: 250  
ø48: 350  
ø50: 350  
ø60: 200  
ø80: 125

# MTR

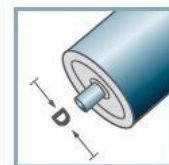


MTR-30-2			
Typ	Di ±0.1	Da ±0.2	C [daN]
MTR-50x1,5.30-2	47,3	49,5	120
MTR-50x2,0.30-2	46,3	49,5	120
MTR-60x1,5.30-2	57,3	59,5	120
MTR-60x2,0.30-2	56,3	59,5	120
MTR-80x2,0.30-2	76,4	79,5	120

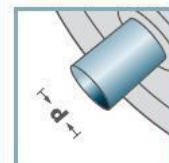
Piasta stalowa ocynkowana.  
 Łożysko typu RL-30-2  
 Koszyk kul z tworzywa sztucznego, pozostałe elementy stalowe.



### MTR-30-2



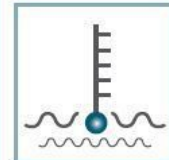
**D** [mm]  
50 - 80



**d** [mm]  
10; 12; 14; 15;  
SW11



**C** [daN]  
120



**T** [°C]  
0° - 100°



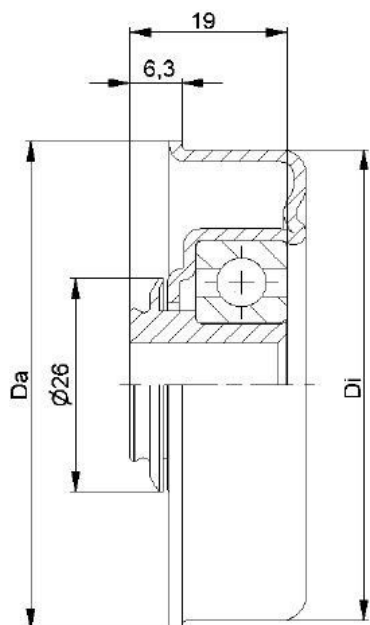
EP 0



**Karton** [Stck.]

ø50: 300  
 ø60: 200  
 ø80: 125

# MTR



MTR-40			
Typ	Di ±0.1	Da ±0.2	C [daN]
MTR-50x1,5.40	47,3	49,5	120
MTR-50x2,0.40	46,3	49,5	120
MTR-60x1,5.40	57,3	59,5	150
MTR-60x2,0.40	56,3	59,5	150
MTR-60x3,0.40	54,3	59,5	150
MTR-80x2,0.40	76,5	79,5	150

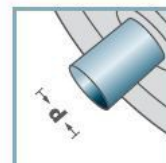
Piasta stalowa ocynkowana.  
 Łożysko typu 6202  
 Tulejka redukcyjna z tworzywa sztucznego.



## MTR-40



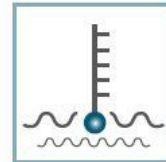
**D** [mm]  
50 - 80



**d** [mm]  
10; 12; SW11



**C** [daN]  
120 - 150



**T** [°C]  
0° - 80°



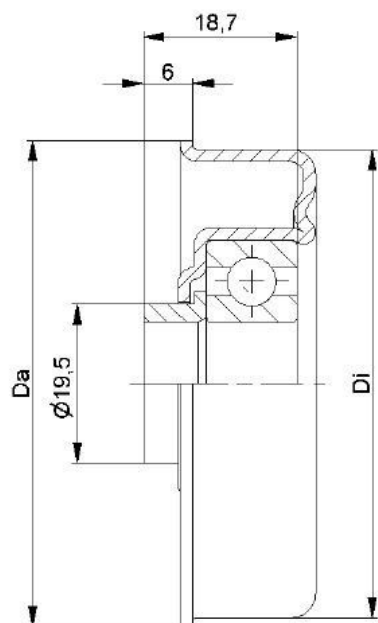
EP 2



**Karton** [Stck.]

ø50: 100  
 ø60: 200  
 ø80: 125

# MTR

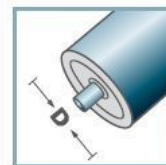


MTR-40.15			
Typ	Di ±0.1	Da ±0.2	C [daN]
MTR-50x1,5.40.15	47,3	49,5	120
MTR-50x2,0.40.15	46,3	49,5	120
MTR-60x1,5.40.15	57,3	59,5	150
MTR-60x2,0.40.15	56,3	59,5	150
MTR-60x3,0.40.15	54,3	59,5	150
MTR-70x2,0.40.15	66,4	69,5	150
MTR-80x2,0.40.15	76,5	79,5	150

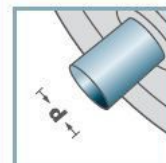
Piasta stalowa ocynkowana.  
Łożysko typu 6202  
Tulejka dystansowa z tworzywa sztucznego.



## MTR-40.15



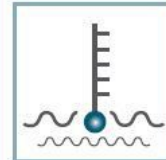
**D** [mm]  
50 - 80



**d** [mm]  
15



**C** [daN]  
120 - 150



**T** [°C]  
0° - 80°



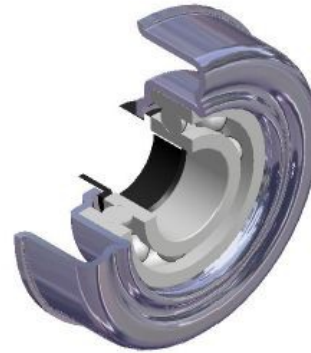
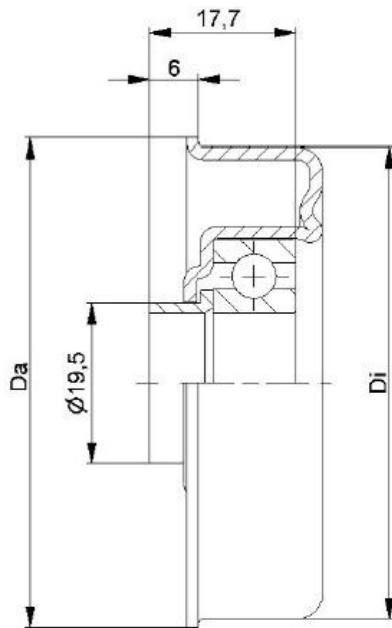
EP 2



**Karton** [Stck.]

ø50: 100  
ø60: 200  
ø70: 125  
ø80: 125

# MTR



### MTR-45.17

Typ	Di ±0.1	Da ±0.2	Tragzahl C [daN]
MTR-50x1,5.45.17	47,3	49,5	120
MTR-60x2,0.45.17	56,3	59,5	150
MTR-60x3,0.45.17	54,3	59,5	150
MTR-80x2,0.45.17	76,5	79,5	150

Weitere Varianten auf Anfrage!

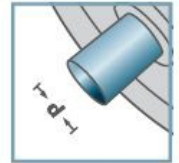
Obudowa stalowa ocynkowana  
Tulejka dystansowa z tworzywa sztucznego  
Łożysko 6003



### MTR-45.17



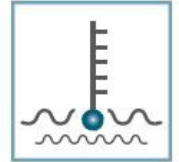
D [mm]  
50, 80



d [mm]  
17



C [daN]  
120 - 150



T [°C]  
0° - 80°



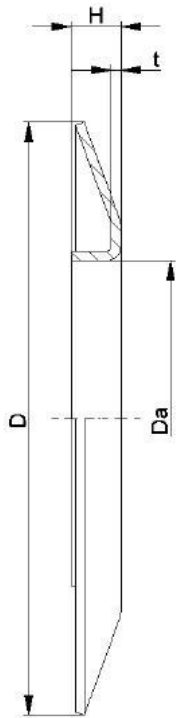
EP 2



Karton [Stck.]

ø50: 100  
ø60: 150  
ø80: 100

# MTR



BS-				
Typ	Da ±0.1	D -2	H ±0.5	t
BS-50-130	49,9	130	10	1,5
BS-60-130	59,9	130	10	1,5
BS-80-150	79,9	150	14	2,5
BS-89-150	88,9	150	14	2,5
BS-108-150	107,9	150	14	2,5

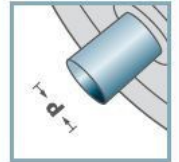
Materiał: stal ocynkowana.



BS-



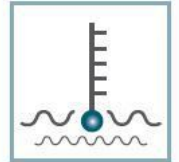
D [mm]  
50 - 108



d [mm]  
-



C [daN]  
-



T [°C]  
-

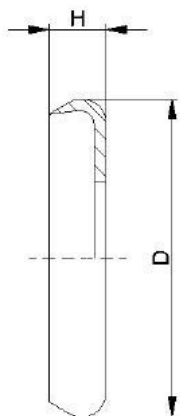


-



Karton [Stck.]

25



DK-MTR		
Typ	D	H
DK-MTR-20	34	7
DK-MTR-30-2	39	7

Pokrywka uszczelniająca z tworzywa sztucznego.

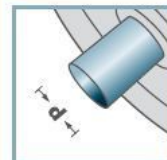


## DK-MTR-



**D** [mm]

-



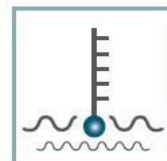
**d** [mm]

-



**C** [daN]

-



**T** [°C]

0° - 80°



-

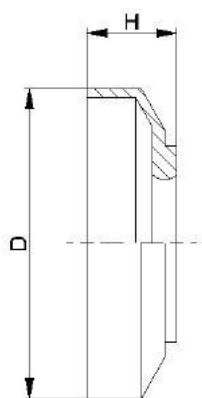


**Karton** [Stck.]



# MTR



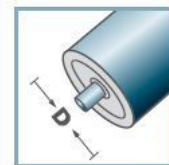


DK-MTR		
Typ	D	H
DK-MTR-30	38	11

Pokrywka uszczelniająca z tworzywa sztucznego.

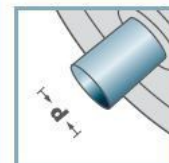


## DK-MTR-



**D** [mm]

-



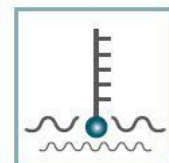
**d** [mm]

-



**C** [daN]

-



**T** [°C]

0° - 80°



-



**Karton** [Stck.]



# MTR